



3-days On-Line International Conference

MIMA-2 (2nd MIMA Conference)

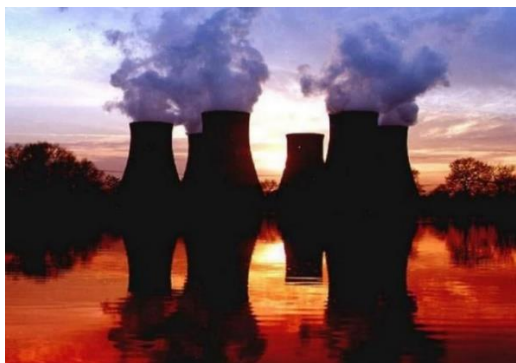
High Temperature Plant Materials, Inspection, Monitoring & Assessment

Conference Acronym: MIMA-2

Venue: On-Line (from London) Dates: 11 – 13 October 2022

MIMA-2

PROGRAMME & Registration Form



SPONSORS



www.a-g-tec.com



www.matelect.com



Approved
for CPD
2022

On-line International Conference



ETD Consulting, 5 Axis Centre, Cleeve Road, Leatherhead, Surrey, KT22 7RD, UK

Tel: + 44 1372 363 111 enquiries@etd-consulting.com

www.etd-consulting.com BS EN ISO 9001: 2015 Certified VAT No: 733600853



ETD Consulting is a trading name of European Technology Development Ltd, Registered in England No: 3553836

CONFERENCE OBJECTIVES

The **aim** of this international conference is to provide an international platform for the exchange of knowledge, information, experience and data related to power and process plant materials, inspection, monitoring and condition/ life assessment issues. Materials and systems developers, and plant designers, fabricators, operators and services providers will be the prime audience in this conference. It is also envisaged that other organisations such as researchers and inspection companies will equally benefit from this experience/ information exchange.

=====

CONFERENCE FORMAT/ ORGANISATION / PRESENTATION TIMES

The on-line Zoom conference principally consists of 32 full-length presentations each of 20 mins. presentation plus 5 mins. questions/answers, except the last four presentations in the Plenary Session which will be of 30 mins. presentation plus 5 mins. questions/answers.

During a presentation only the speaker will have his/her mike and video on. However, during the Conference opening and other group discussions at the end of each day all attendees will be welcome to have their videos on but will be requested to keep their mikes muted to avoid background disturbance/noise. Those who wish to make a comment/ask questions can click on the 'raise hand' symbol at the bottom of the Zoom screen and the Discussion Leader will ask him/her to unmute his/her mike and speak. This will mean that all attendees will be able to see each other and be involved in group discussions, as in a normal/traditional conference.

During the question/answer time at the end of a presentation, the Session Chairperson will ensure that only one questioner is able to speak at a time, while all other attendees, except the questioner and the presenter, will remain muted.

The Conf. will start every day (UK times) at 0800h and finish between 1400 and 1430h, the last half an hour devoted to the general discussion and participation by all delegates. However, you are advised to log in at about 0745h each day for introduction to the day's proceedings.

WHO SHOULD ATTEND?

Plant operators, owners, designers, fabricators and service providers will be the prime audience in this conference. It is also envisaged that other organisations such as research and inspection companies will equally benefit from this experience and the information exchange.

DEADLINES

PRESENTATIONS: To be sent to ETD by: **20th September 2022.**

SUBMISSIONS

Proceedings: ETD will aim to provide the presentations to the attendees at least one week before the start of the conference to make sure that the attendees get maximum benefit from the conference.

All Submissions (& Technical Enquiries to):

Dr Ahmed Shibli ashibli@etd-consulting.com Tel: +44 788 109 7730

Administration Related Enquiries to: enquiries@etd-consulting.com

SUBMISSION OF PAPERS (OPTIONAL)

Arrangements have been made for the publication of a Special Issue of the journal 'Materials at High Temperature'. As this Conference is aimed at industry, submission of papers is optional but those which are submitted will be considered for publication in this Special Issue.

CONFERENCE PROGRAMME

UK times throughout

DAY – 1 Tuesday 11th October 2022 0800 – 1430h (UK time)

INTRODUCTION TO THE CONFERENCE (0800 - 0815h)

Katherine Asvegren, VPI, UK (Conference Chairman)
Dr Ahmed Shibli, ETD, UK (Conference Coordinator)
Rebecca Kelly, ETD, UK (Conference Organiser)

SESSION 1: HIGH TEMPERATURE MATERIALS ISSUES (0815 – 1125h)

Chairman: Dr. David Allen, ETD, UK

Paper 1-1 (0815 -0840h)

Role of inclusions on degradation in creep life and rupture ductility of ferritic power plant steels

Fujio Abe, National Institute for Materials Science (NIMS), Tsukuba, Japan

Paper 1-2 (0840 -0905h)

Development and manufacture of IBN1 MarBN steel wrought pipe for advanced high temperature application

Steve Roberts, Goodwin Steel Castings; Steve McCoy, Special Metals Wiggin; Martin Strangwood, Uni. of Birmingham; Mark Jepson, Loughborough Uni.; Paul Robb, Doosan Babcock; Scott Lockyer, Uniper Technologies Limited; Zhuyao Zhang, Lincoln Electric Europe; and David Allen, European Technology Development, UK

Paper 1-3 (0905 -0930h)

Project HOWEFLEX- MarBN rotor qualification for load flexible application

T-U Kern, Siemens Energy GmbH

B Donth, Saarschmiede GmbH

U Langer, GE Power

G Maier, Fraunhofer Institute for Mechanics of Materials, IWM Freiburg

M Schwienheer, Institute of Materials Technology, TU Darmstadt

Germany

COFFEE BREAK 0930 – 0945h (15 mins.)

Chairman: Prof Scott Lockyer, Uniper, UK

Paper 1-4 (0945 -1010h)

Multi-component alloying element effects on solidification segregation in cast IBN1-based CSEF steels

M Strangwood, University of Birmingham, UK

Paper 1-5 (1010 -1035h)

Normalising temperature selection for creep performance of advanced high temperature alloy IBN1

W Philpott, M.A.E. Jepson, R. Maclachlan, Loughborough University, UK

Paper 1-6 (1035 -1100h)

Experience of P93 manifold welding under real fabrication conditions

P de Smet, K Tang, M Bok, Siemens Energy Heat Transfer Technology B.V., The Netherlands

Paper 1-7 (1100 -1125h)

Development of INCONEL alloy 740H and its application to supercritical CO₂ power plant

Steve McCoy, Special Metals Wiggin, UK

LUNCH / DINNER BREAK 1125 – 1210h (45mins.)
--

SESSION 2: PLANT LIFE ASSESSMENT

Chairman: Prof. em. EurIng. Staf Huysmans, ENGIE Laborelec, Belgium

(1210 – 1430h)

Paper 2-1 (1210-1235h)

Prediction of long-term creep life based on short-term data of used Grade 91 steels

M Yaguchi, CRIEPI, Japan

Paper 2-2 (1235 -1300h)

The new Italian standard about life assessment of martensitic steels - first results of experimental validation activity of XRD by testing P91 and P92 samples from interrupted uniaxial creep tests

Andrea Tonti, Pietro De Blasi, INAIL, Italy

Paper 2-3 (1300-1325h)

Residual life assessment of critical piping systems

Bhaskara Santosh Kumar Pudipeddi, DGM (PE - Mechanical), NTPC, India

Vineet Kumar - Manager (PE- Mechanical), NTPC, India

Paper 2-4 (1325-1350h)

Real-time creep remnant life prediction for fired heaters

H Othman, H Chik, NH Kamaruzaman, PETRONAS Group Technical Solutions, Malaysia

GENERAL DISCUSSION – Materials & Life Assessment Issues (1400-1430h)

Chairman: Dr. David Allen, ETD, UK

DAY – 2

Wednesday 12th October 2022

0800 – 1430h

(UK time)

WELCOME & INTRODUCTION TO DAY-2

(0800 - 0815h)

SESSION 3: PLANT INSPECTION AND MAINTENANCE

(0815 - 1430h)

Chairman: Rod Vanstone, Vanstone Consultancy Ltd, UK

Paper 3-1 (0815 -0840h)

DX (digital transformation) of boiler maintenance

Shigemitsu Kihara and Toshiaki Yoshida, Best Materia Co., Tokyo, Japan

Paper 3-2 (0840 -0905h)

Risk-based maintenance for steam turbines and generators

Pascal Decoussemaeker, GE, Switzerland

Paper 3-3 (0905 -0930h)

Evaluation of various risk-based maintenance procedures and recommendations for best practises

Feroza Akther, European Technology Development, Leatherhead, Surrey, UK

COFFEE BREAK 0930 – 0945h (15 mins.)

Chairman: Dr. Andrea Tonti, INAIL, Italy

Paper 3-4 (0945 -1010h)

Risk based inspection and integrity management of HRSG headers and manifolds

David Tuey, RWE, UK

Paper 3-5 (1010 -1035h)

Inspection of pipelines with varying cross sections using a combined multidisciplinary and robotized solution.

Alfredo LAMBERTI, ENGIE Laborelec, Belgium

Paper 3-6 (1035-1100h)

Possible microstructural resistant factors in P91 steel to the magnetic domain wall motion of electro-magnetic inspection method

Yasushi Hasegawa¹, Noriyuki Ishii¹, Masayuki Kodama², Akito Kunieda³, Kazuyuki Shimizu³, Yasuhiro Kamada³.

1: Nippon Steel Technology Co. Ltd.

2: Nippon Steel Corporation

3: Iwate University, Japan

COFFEE BREAK 1100 – 1115h (15 mins.)

Chairman: Dr. Stuart Holdsworth, EMPA, Switzerland

Paper 3-7 (1115 -1140h)

Inspecting the un-inspectable – A review of a project delivering a new inspection technique on complex geometries

John Trelawny – Technical Lead Specialist Inspections – Uniper Technologies Limited, Integrity and Inspection Solutions Department, Uniper, UK

Paper 3-8 (1140 -1205h)

High-temperature corrosion data and mechanism of T122, Super 304H and HR3C in a 1000MW ultra-supercritical power plant

Haomin Wu(a), Shuo Wang(a,b), Qinxin Zhao(a), Zhiyuan Liang(a)

a) Key Laboratory of Thermal Fluid Science and Engineering of MOE, School of Energy and Power Engineering, Xi'an Jiaotong University, Xi'an 710049, China

b) Harbin Boiler Company Limited, Harbin 150046, China

LUNCH / DINNER BREAK 1205 – 1250h (45 mins.)

Chairman: Dr. David Robertson, ETD, UK

Paper 3-9 (1250 -1315h)

Electric potential drop surface mapping for creep damage evaluation in P91 steel welds

Adam Wojcik, Alberto Santos, Mathew Waitt, Matelect

Ahmed Shibli, David Allen, European Technology Development, UK

Paper 3-10 (1315 -1340h)

Robotics applied to inspection of infrastructure - examples of internal and external pipe inspection

Paulo Debenest, HiBot, Japan

Paper 3-11 (1340 -1405h)

Sponsors' Presentations (5 to 10 mins. each)



www.Matelect.com

www.a-g-tec.com

GENERAL DISCUSSION – (1405-1430h)

Chairman: Katherine Asvegren, VPI, UK

Introduction to Day-3

(0800 – 0815h)

SESSION 4: COMPONENT DAMAGE & FAILURE

Chairman: Dr Koichi Yagi, National Center for Materials Service Safety, University of Science & Technology Beijing, China

(0815 – 0930h)

Paper 4-1 (0815 -0840h)

Real time damage monitoring software (RTDMS)

Aron Abolis, Warwick Payten, ALS Global, Australia

Paper 4-2 (0840 -0905h)

CrackFit: A software for crack assessment in pressure vessels and turbines

David Robertson, European Technology Development, Leatherhead, Surrey, UK

Stuart Holdsworth, EMPA, Switzerland

Paper 4-3 (0905 -0930h)

Developing reliability framework for power plants - Integrated RCM IV Generation implementation

Nadeem Ahmed, ETD Consultant, UK

COFFEE BREAK 0930 – 0945h (15 mins.)

SESSION 5: POWER PLANT FLEXIBILITY ISSUES

(0945 – 1100h)

Chairman: Katherine Asvegren, VPI, UK

Paper 5-1 (0945 -1010h)

Predicting high temperature component integrity in turbines required for flexible operation - evaluating assessment effectiveness

Stuart Holdsworth, Empa: Swiss Federal Laboratories for Materials Science & Technology, Switzerland

Paper 5-2 (1010 -1035h)

Cavitation during creep-fatigue loading

Rolf Sandström, Materials Science and Engineering, KTH Royal Institute of Technology, Stockholm, Sweden

Paper 5-3 (1035 -1100h)

Use of filming chemistry to improve corrosion protection of flexible operated power plants

Manfred Jansen, Anodamine, The Netherlands

Adrian Bailey, VPI, UK

LUNCH / DINNER BREAK 1100 – 1130h (30 mins.)

SESSION 6: PLENARY SESSION (1130 – 1430h)
(30 minutes presentation + 5 minutes discussion)

Chairman: Dr Ahmed Shibli, ETD, UK

Paper 6-1 (1130 -1205h)

Life assessment of high temperature plant – The role of materials design data
David J Allen, European Technology Development, Leatherhead, Surrey, UK

Paper 6-2 (1205 -1240h)

Life evaluation and research subjects for safe service of 9Cr steels used in UCS power plants
Koichi Yagi, Meilin Wang and Yonghao Lu; National Center for Materials Service Safety, University of Science & Technology Beijing, China

COFFEE BREAK 1240 – 1255h (15 mins.)

Paper 6-3 (1255 -1330h)

HRSG design challenges: materials and mechanical integrity
Ian J. Perrin, Triaxis Power Consulting, LLC., USA

Paper 6-4 (1330 -1405h)

Activities to advance residual life evaluation techniques for highly aged power plant boiler materials in Japan
Isamu Nonaka, Tohoku University, Japan

DISCUSSION & CLOSING REMARKS 1405-1430h

Chairman: Dr Ahmed Shibli, ETD, UK

=====

Conference Technical Committee

Katherine Asvegren, VPI, UK, Chairman	Prof Peter Mayr, Technical Uni. Munich, Germany
Dr Ahmed Shibli, ETD, UK, Coordinator	Steven Stultz, Combined Cycle Journal, USA
Dr David Allen, ETD, UK	Dr Stuart Holdsworth, EMPA, Switzerland (Guest Editor, Special Conf. Issue of the Journal 'Materials at High Temperature')
Dr Andrea Tonti, INAIL, Italy	Dr S Kihara, Best Materia, Japan
Dr Gunther Merckling, RTM Breda, Italy	Dr M Yaguchi, CRIEPI, Japan
Prof K-B Yoon, Chung Ang University, Korea	Rod Vanstone, Consultant, UK
Prof Scott Lockyer, Uniper Technologies, UK	Prof. em. EurIng. Staf Huysmans, ENGIE Laborelec, Belgium

Conference Organising Committee

Dr Ahmed Shibli, ETD, UK	Rebecca Kelly, ETD, UK
Dr David Allen, ETD, UK	Feroza Akther, ETD, UK

The Organiser

European Technology Development (ETD)

ETD is an independent UK based engineering, consulting and R&D company specialising in high temperature plant inspection and life assessment/extension, maintenance, materials and engineering issues in all type of power generating and petrochemical/ process plant. ETD has, in the past, organised various international workshops/courses/conferences in the UK, Europe, USA, Canada, Japan, Korea and Asia mainly on the issues such as: power and process plant life assessment/extension, high temperature plant materials, plant component safety and durability, performance of in-service welds, power plant cycling, risk-based maintenance (RBM), Reliability Centered Maintenance (RCM), probabilistic life and crack assessment, weld repairs etc. The company has been leading and co-ordinating a number of large cutting edge international industry projects (supported by the industry from North America, Japan, Europe and elsewhere or by the UK government and European Commission) on issues related to the assessment and improvement of high temperature plant performance, materials and design, maintenance and inspection strategies, and the development of innovative inspection techniques. The company has carried out/ participated in leading edge projects on P91 weld repairs, crack assessment, integrity issues and has carried out studies of P/T91 performance in plant worldwide. Further information about ETD, its projects, life assessment courses offered and other activities can be seen at: www.etd-consulting.com

REGISTRATION FORM (Please email)

International On-Line Conference **High Temperature Plant:** **Materials, Inspection, Monitoring and Assessment (MIMA-2)**

Dates: 11 – 13 October 2022

Registration Fee: Please put 'x' in the relevant box and show the total payment.
Fee is to be paid in GB Pounds.

	Reduced Fee (Until 12 Sep. 22)	x	Full Fee (From 13 Sep. 22)	x
Conference Delegates	£200		£250	
Conference Presenters	£150		£150	
Please show here (no. of attendees <input type="text"/> x £ <input type="text"/>): Total Amount Payable = <input type="text"/>				

Conference Registration Fee covers: Organisation of Conference, Provision of the Conference Presentations.

How to Pay: *When paying please quote reference 'MIMA-2 Conf.' and the ETD invoice number (if this was issued):*

1) By bank to bank transfer to: European Technology Development Ltd.
(ETD bank account details will be provided on request)

2) Credit Cards: Payment information will be provided on request.

When registering, please state here how you paid or intend to pay:

.....
.....

All Registration & Payment enquiries to: enquiries@etd-consulting.com

Delegate/ Speaker Details

Your **title** and **name:**

Company:

Job Title (optional):

Address:

Phone:

E-mail:

Address for Registration:

Please email the completed Form to: enquiries@etd-consulting.com